

Local Jobs for Regional Recovery

Priorities for Government collaboration
4 October 2022



Today's launch

1. Welcome and overview - ERG Chair, Cr Michelle Kleinert
2. Our **Environment** - Eastern Alliance for Greenhouse Action Chair, Cr June Dwight
3. Our **Infrastructure** - Eastern Transport Coalition Chair, Cr Stuart James
4. Our **Communities** - Eastern Affordable Housing Alliance Chair, Cr Rebecca Paterson
5. Call for greater collaboration and a strengthened partnership - ERG Chair
6. Close – 2.30pm

Key partners

- > **EAGA** - Eastern Alliance for Greenhouse Action
- > **ETC** - Eastern Transport Coalition
- > **MEREDG** - Melbourne East Regional Economic Development Group
- > **EAHA** - Eastern Affordable Housing Alliance
- > Regional Local Government Homelessness and Social Housing **Charter** Group (made up of 13 councils)
- > **ERTWG** – Eastern Regional Trails Working Group
- > **EMP** – Eastern Metropolitan Partnership
- > **MAV** – Municipal Association of Victoria

The logo for EAHA features the letters 'EAHA' in a bold, sans-serif font. Each letter is a different color: 'E' is blue, 'A' is green, 'H' is yellow, and 'A' is orange. Small white house icons are placed inside the 'A's.

Eastern Affordable
Housing Alliance

The logo for Commuters Count features the words 'Commuters' and 'Count' in a bold, blue, sans-serif font. Above the text is a horizontal line with three circular icons: a bus, a bicycle, and a person walking. To the right of 'Count' is the text 'Eastern Transport Coalition' in a smaller font.The logo for MEREDG features a stylized 'M' made of two overlapping shapes, one purple and one orange. To the right of the 'M' is the text 'MELBOURNE EAST REGIONAL ECONOMIC DEVELOPMENT GROUP' in a bold, black, sans-serif font.The logo for EAGA features the letters 'EAGA' in a large, green, outlined font. To the right of 'EAGA' is the text 'EASTERN ALLIANCE FOR GREENHOUSE ACTION' in a bold, black, sans-serif font.

The eastern region

- > 20% of Melbourne's population
- > 17% of Melbourne's jobs
- > Major employment in manufacturing, health, education, service industries and tourism
- > Monash NEIC, 23 Major Activity Centres (Box Hill & Ringwood), the Bayswater Business Precinct (BBP), the Dandenong's & Yarra Valley
- > Largely developed in the early 1900's and post-war period – ageing infrastructure

Population

924,028

ABS ERP 2021

Land area

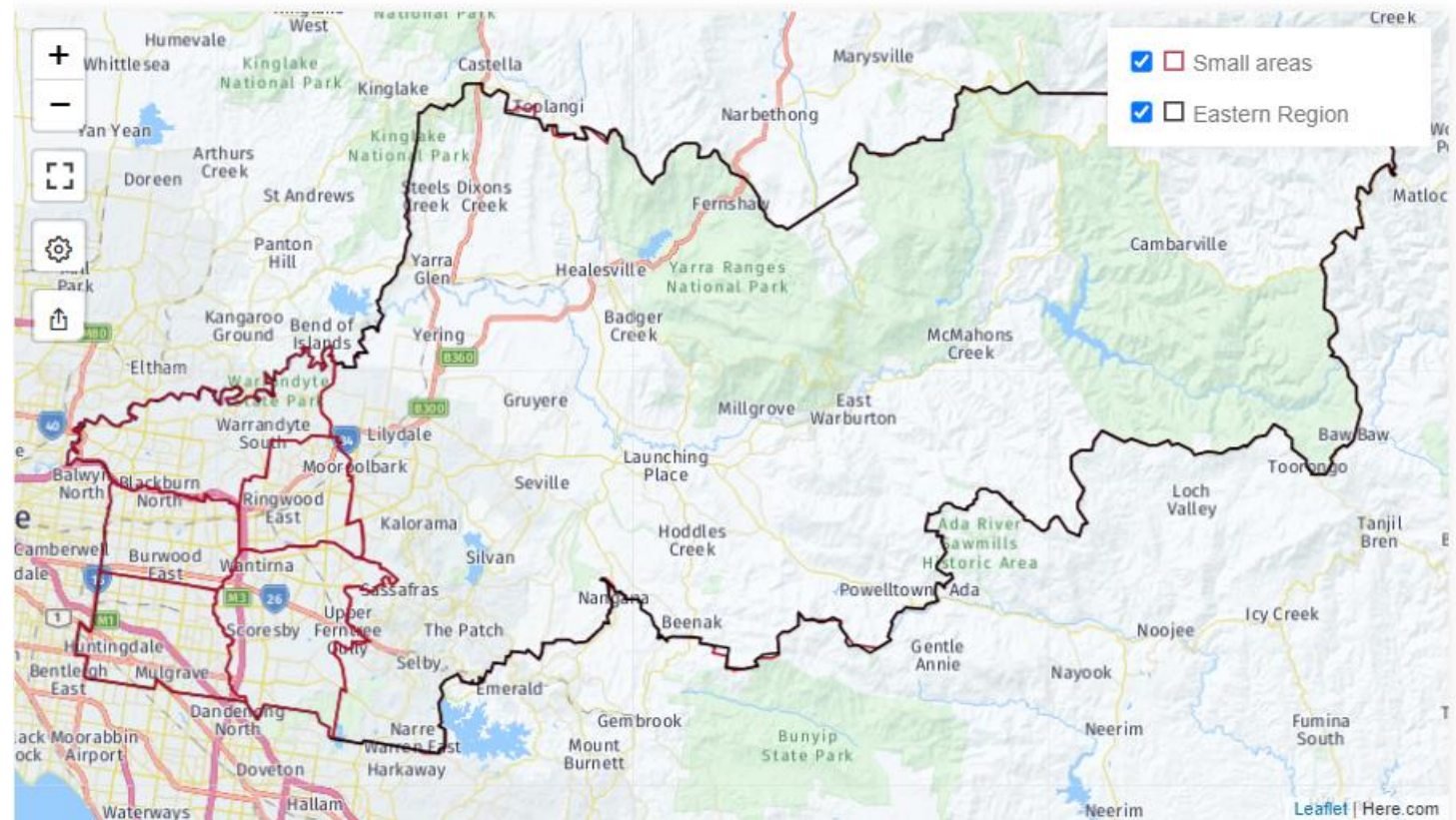
2,901

square km

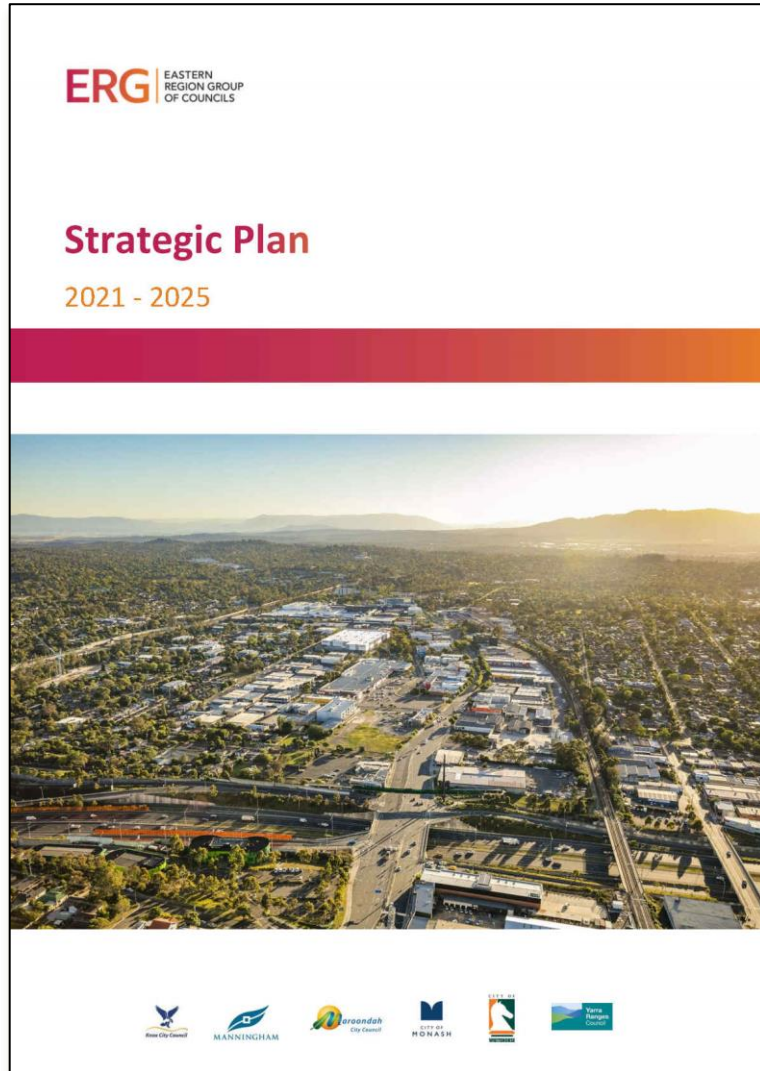
Population density

318.5

persons per square km

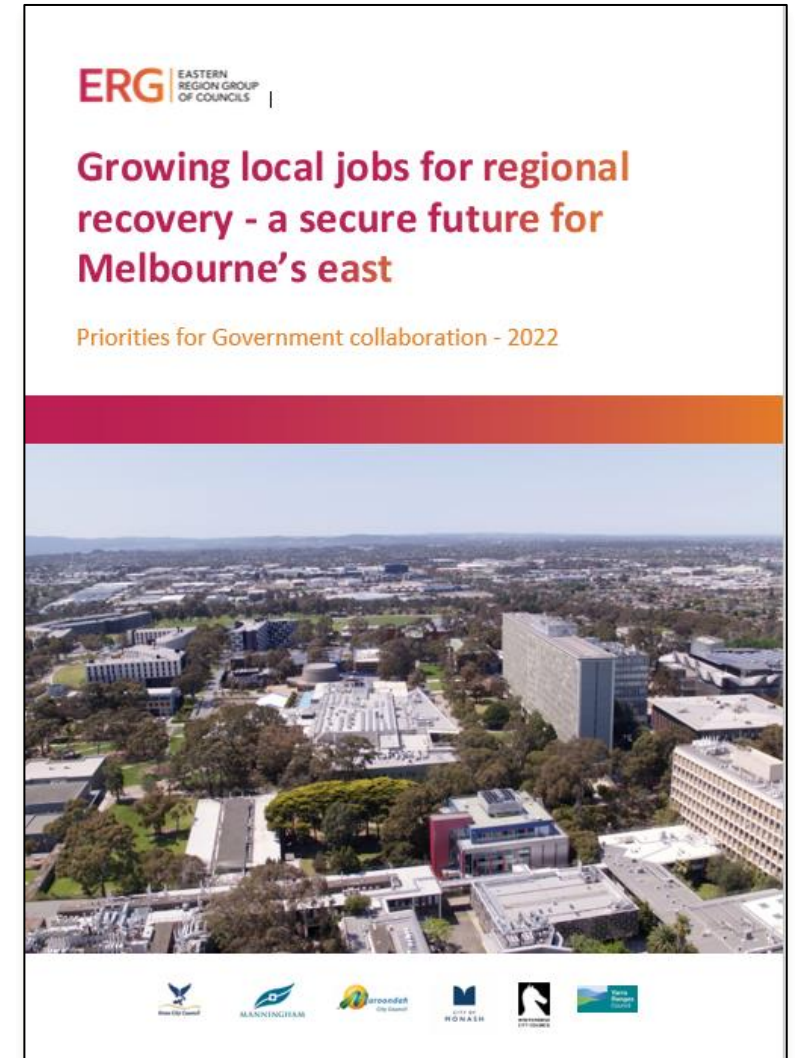


Strategic Plan



*Our vision is to be a
connected, healthy,
sustainable and
prosperous region*

Regional Priorities



Our economy

Objectives

1. encourage working locally to retain local economic benefits and reduce congestion
2. support regional economic development and investment attraction
3. through MEREDG, utilise shared service opportunities to support economic growth, Better Approvals, and deliver campaigns

Challenges

- > significant increase in unemployment particularly in the outer east
- > ongoing automation, off-shoring & gig economy impacting service industries and displacing some jobs
- > local growth demand is highest in health care and social services, education and construction
- > greatest decline in manufacturing with 25% fewer jobs in 2016 compared to 2011



Our economy

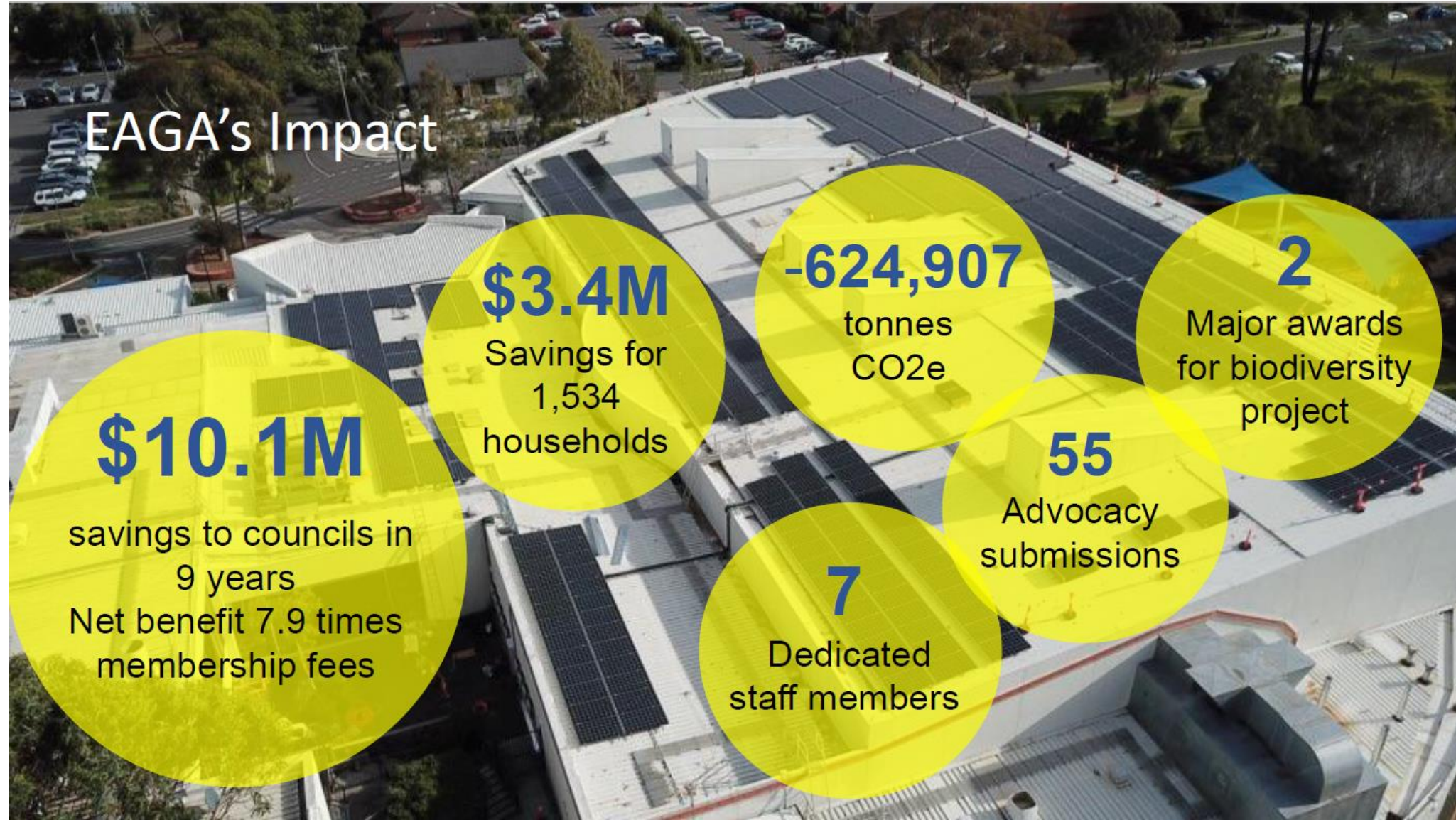
Opportunities

- > Develop comprehensive **joint priority precinct investment plans**
- > Improve and expand **20-minute neighbourhoods** - to benefit more people and grow jobs closer to home
- > Support **COVID recovery** for key sectors, such as retail and tourism
- > Explore expanded **co-working clusters**
- > Build awareness and uptake of **circular economy** approaches

*Diverse local employment opportunities
for an adaptable workforce, ready for
the jobs of the future*



Our Environment



EAGA's Impact

\$10.1M

savings to councils in
9 years
Net benefit 7.9 times
membership fees

\$3.4M

Savings for
1,534
households

-624,907

tonnes
CO₂e

2

Major awards
for biodiversity
project

55

Advocacy
submissions

7

Dedicated
staff members

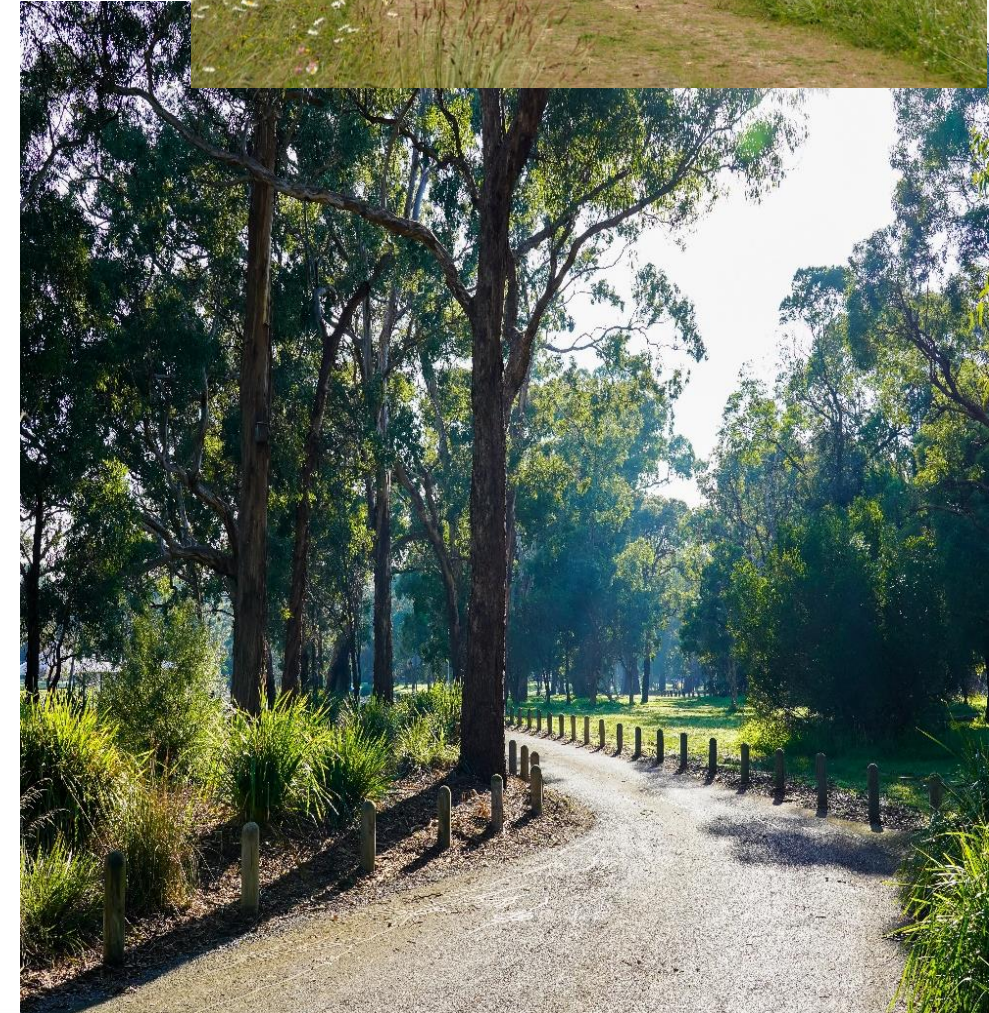
Our Environment

Objectives

1. Urban greening and increased canopy for shade, clean air and high amenity 20-minute neighbourhoods
2. Reduce regional emissions in line with the Paris Agreement
3. Increase active transport and accelerate roll-out of electric vehicles
4. Seek funding to replace cost-shared street lights and implement smart city technologies
5. Improve recycling and waste management through education, joint procurement and new technologies

Challenges

- > more frequent and severe weather events - storms and heatwaves
- > canopy loss faster than for other regions of Melbourne
- > supply chains impacting roll-out of solar and other programs
- > need for stronger consideration of climate risk in development.



Our Environment

Opportunities

- > **Plan for a Safe Climate** – with major policy and legislative reform
- > Facilitate **power purchase agreements (PPAs)** for businesses to transition to 100% renewable energy
- > **Resilient local networks** – through micro-grids and community battery solutions - especially for areas most exposed to major storm events
- > Faster **roll-out of EV** charging infrastructure to fast track the shift to EVs
- > Funding to deliver a 30% **increase in tree canopy**

A region known for its environmental stewardship and responses to sustainability where healthy ecosystems support healthy people and growing economies.



Our Infrastructure

Objectives

1. Improve transport options, integration and service levels through bus service network reviews and address missing rail and service links
2. Coordinate land use planning to deliver sustainable, resilient, adaptable and healthy buildings and increased affordable housing
3. Improve the contribution of planning and building systems to climate resilience and ESD

Challenges

- > poor east-west and north-south links, high car dependency
- > poor connectivity and service gaps reduce access to jobs and services, particularly for young people and those without access to a car
- > multi-modal connections at train stations
- > cost escalations and access to labour and materials impact project delivery
- > disruption / value creation through major projects (LXRP, NEL and SRL)



Our Infrastructure

Opportunities

- > Create and realise greater value from major projects such as the Suburban Rail Loop and North East Link
- > Implement the ETC's Bus Network Review
- > Progress the business case for the Caulfield-Monash-Rowville trackless tram.
- > Build public transport network capacity:
 - > duplicate the Lilydale rail line
 - > extend Route 75 tram from Vermont South to the Upper Ferntree Gully Station.

Infrastructure promotes social cohesion, equality of opportunity, resource efficiency and health - in a region that's easy to get around where active transport is preferred for short distances.



Transport & State election **October**
Free public forums about transport with Q&A
Merri-bek, Melton, Mornington Peninsula, Banyule, Whitehorse & Casey
mtf.org.au /events **Book a seat**
Suggest a question



Our Communities

Objectives

1. Empower communities to take active responsibility for their own and each other's wellbeing, safety and health
2. Respond to homelessness and increase social housing supply
3. Tackle family violence, mental health and social inclusion
4. Create opportunities for inclusive, creative and cultural experiences
5. Improve pathways to employment for youth and over 50's across key sectors in our region

Challenges

- > poor access to mental health services due to demand and access
- > labour force shortages in the care economy
- > Inflexible funding arrangements, cost-shifting and rate capping
- > social and affordable housing shortfall



Our Communities

Opportunities

- > Support EAHA's calls for at least 11,700 new **social and affordable homes** in the eastern region by 2032
 - > introduce planning controls such as mandatory inclusionary zoning
 - > maintain affordable rentals
 - > develop public land
 - > improve thermal comfort and energy efficiency to reduce operating costs.
- > **Mental health** - expand headspace and outreach services
- > **Early years** - fund kindergarten infrastructure and 3-year-old kindergarten
- > **Sport and recreation** - support shared facilities particularly with schools

*More resilient and cohesive,
communities with an improving quality
of life, better health and wellbeing and
great access to services.*



A stronger partnership

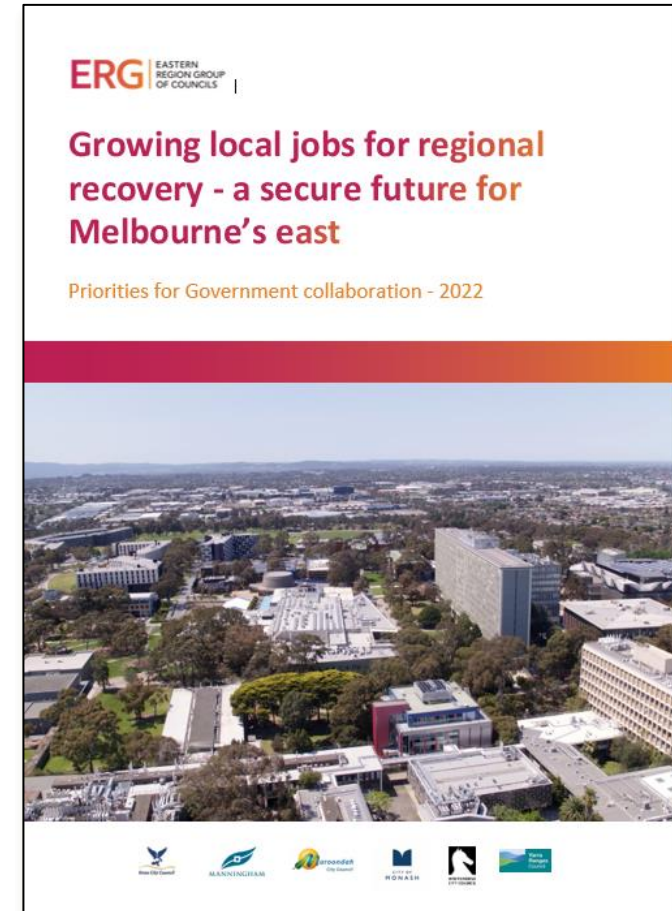


Website:

www.easternregiongroup.org.au

LinkedIn:

<http://www.linkedin.com/company/eastern-region-group-of-councils>



**Melbourne's
eastern region.
One united voice.**